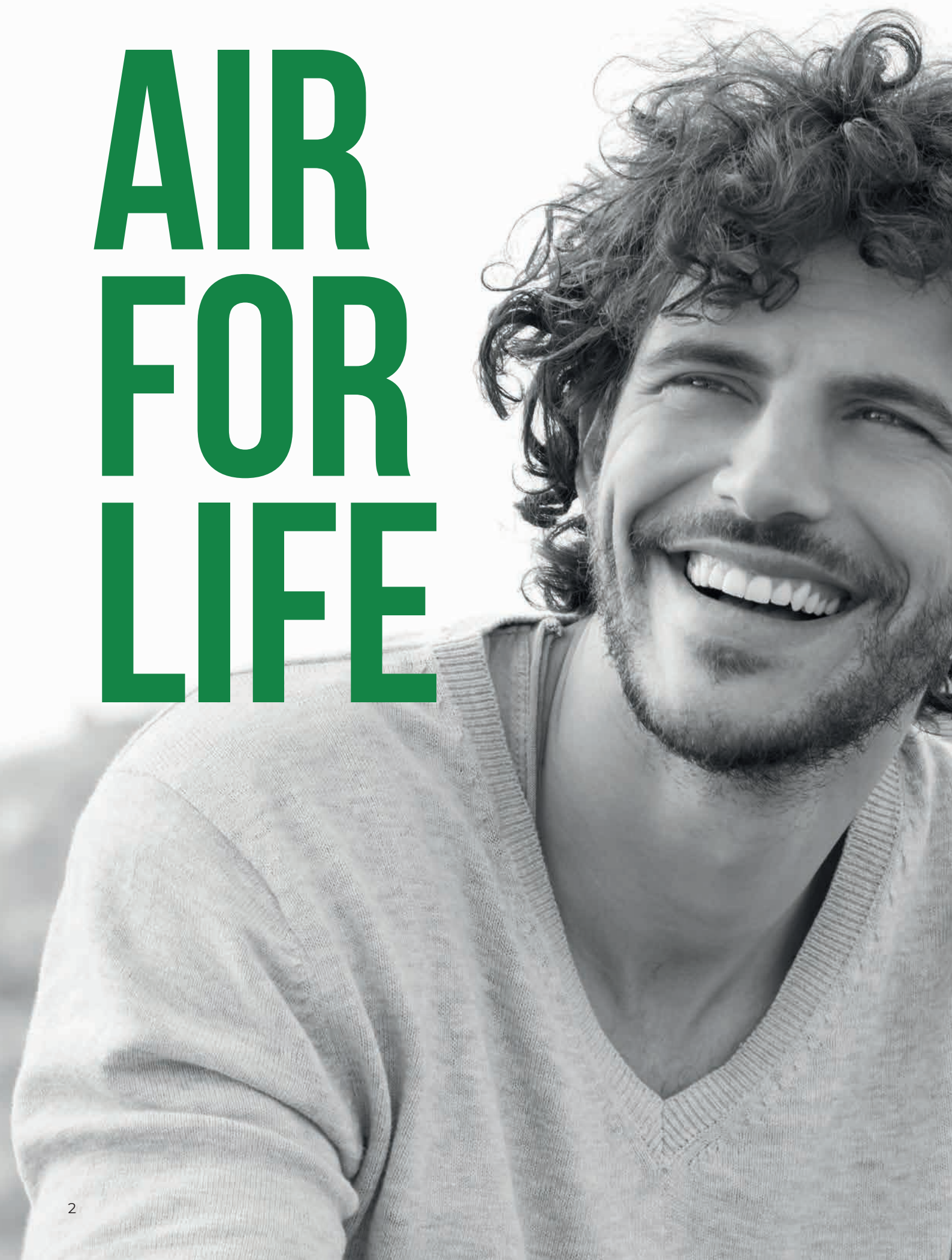


# PRODUCT CATALOG



# AIR FOR LIFE





# APPLICATIONS

● since 1992



## AIR FOR DENTISTRY

Compressed air and vacuum for a wide range of dental equipment and devices in dental surgeries and clinics. From compressors to suction systems.



## AIR FOR LABORATORIES

High quality compressed air for various diagnostic, analytical and measurement devices to drive and control their pneumatic components.



## AIR FOR HEALTHCARE

Quiet and reliable compressors for respiratory equipment (lung ventilators and anesthesia machines), for surgical instruments and sterilisation.



## AIR FOR INDUSTRY

Oil-free compressors and air pumps for transportation, food, textile industry and railways. Options for on-demand product customization.





DENTAL COMPRESSORS

# AIR FOR SMILE

# COMPRESSORS



## DK50 SIMPLE

	0.43 kW
	4.5 bar
	4.7 l
	50 l.min <sup>-1</sup>
S1-S3	S1 - 100%
+	BOX



## DK50-10

	0.55 kW
	6 bar, 8 bar
	10 l
	70 l.min <sup>-1</sup>
S1-S3	S1 - 100%
+	BOX MD AD FS REG AOK



## DK50 PLUS

	0.55 kW
	6 bar, 8 bar
	25 l
	70 l.min <sup>-1</sup>
S1-S3	S1 - 100%
+	BOX MD AD FS REG AOK



## DK50 2V

	1.2 kW
	6 bar, 8 bar
	25 l
	135 l.min <sup>-1</sup>
S1-S3	S1 - 100%
+	BOX MD AD FS REG AOK



For full range of our product portfolio visit [www.ekom.sk](http://www.ekom.sk)

# COMPRESSORS



## DK50 2V/50

	1.2 kW
	6 bar, 8 bar
	50 l
	135 l.min <sup>-1</sup>
S1-S3	S1 - 100%
+	BOX MD AD FS REG AOK 3KOM



## DK50 4VR/50

	2.2 kW
	6 bar, 8 bar
	50 l
	270 l.min <sup>-1</sup>
S1-S3	S1 - 100%
+	BOX MD AD FS REG AOK 3KOM



## DK50 2X2V/110

	2 x 1.2 kW
	6 bar, 8 bar
	110 l
	270 l.min <sup>-1</sup>
S1-S3	S1 - 100%
+	BOX MD AD FS REG AOK 3KOM



## DK50 2X4VR/110

	2 x 2.2 kW
	6 bar, 8 bar
	110 l
	540 l.min <sup>-1</sup>
S1-S3	S1 - 100%
+	BOX MD AD FS REG AOK 3KOM





# NOISE REDUCTION CABINETS

**BOX** Designed for quiet working environments in surgeries, labs or industrial spaces where compressors are used frequently. Sheet metal cabinets with sound-proofing foams minimize the noise by 20 dB(A). They feature active ventilation to ensure effective airflow and control heat management of compressor.

## DRYERS

**MD** Membrane dryers for applications which require standard dry air at pressure dew point +3°C, ensuring optimal performance of dental, laboratory or other equipment.

**AD** Adsorption dryers with pressure dew points -20°C, -40°C and even -70°C provide very dry compressed air for the most demanding applications.

**RD** Refrigerating dryers with pressure dew point of +3°C are designed for any equipment and application where high flows and standard dry air is required.



# COMPRESSORS WITH DENTAL SUCTION SYSTEM



## DUO

	0.55 kW
	6 bar
	25 l
	70 l.min <sup>-1</sup>
	1100 l.min <sup>-1</sup>
	12 kPa
S1-S3	S1 - 100 %
+	BOX MD FS REG AOK DS

## DUO 2V

	1.1 kW
	6 bar
	25 l
	135 l.min <sup>-1</sup>
	1100 l.min <sup>-1</sup>
	12 kPa
S1-S3	S1 - 100 %
+	BOX MD FS REG AOK DS

## DUO 2

	1.1 kW
	6 bar
	25 l
	135 l.min <sup>-1</sup>
	2 x 1100 l.min <sup>-1</sup>
	12 kPa
S1-S3	S1 - 100 %
+	BOX MD FS REG AOK DS



## DBXe

	0.37 kW
	5 bar
	8.3 l
	50 l.min <sup>-1</sup>
	300 l.min <sup>-1</sup>
	13 kPa
S1-S3	S1 - 100 %
+	BOX DS



## DBX-De

	0.37 kW
	5 bar
	8.3 l
	50 l.min <sup>-1</sup>
	1100 l.min <sup>-1</sup>
	12 kPa
S1-S3	S1 - 100 %
+	BOX DS



For full range of our product portfolio visit [www.ekom.sk](http://www.ekom.sk)



# DENTAL SUCTION SYSTEMS



WET SUCTION

## DO 3 / BASIC

	300 l.min <sup>-1</sup>
	13 kPa
S1-S3	S1 - 100 %
+	BOX DS VV HF

## DO 3 / STANDARD

	600 l.min <sup>-1</sup>
	16 kPa
S1-S3	S1 - 100 %
+	BOX DS AS VV HF

## DO 3 / ADVANCED

	900 l.min <sup>-1</sup>
	20 kPa
S1-S3	S1 - 100 %
+	BOX DS AS VV HF



DRY SUCTION

## DO 2.1

	1100 l.min <sup>-1</sup>
	12 kPa
S1-S3	S1 - 100 %
+	BOX DS



WET SUCTION

## DO M

	1100 l.min <sup>-1</sup>
	12 kPa
S1-S3	S1 - 100 %
+	BOX



For full range of our product portfolio visit [www.ekom.sk](http://www.ekom.sk)

A black and white photograph of a man with a beard and long hair, wearing a striped shirt, blowing bubbles. He is holding a bubble wand in his right hand and a small bottle of bubble solution in his left. The background is a bright, overexposed outdoor setting, possibly a beach. A purple circle is positioned above the text 'LABORATORY COMPRESSORS'.


LABORATORY COMPRESSORS

# AIR FOR SCIENCE

# MOBILE COMPRESSORS



## DK50-10 S/M MOBILE

 0.55 kW

 <sub>OUT</sub> 6.5 bar

 10 l


 50 l.min<sup>-1</sup>


S1-S3 S1 - 100%

+  BOX  MD  FS  REG



## DK50 2V MOBILE

 1.2 kW

 <sub>OUT</sub> 6 bar, 8 bar

 25 l

 135 l.min<sup>-1</sup>

S1-S3 S1 - 100%

+  BOX  MD  FS  REG



For full range  
of our product  
portfolio visit  
[www.ekom.sk](http://www.ekom.sk)



# COMPRESSOR STATIONS



## DK50 3X4VR/M

	3 x 2.2 kW
	6 bar, 8 bar
	290 l
	780 l.min <sup>-1</sup>
S1-S3	S1 - 100 %
+	RD AD FS REG



## DK50 4X4VRT/M

	4 x 2.2 kW
	6 bar, 8 bar
	500 l
	1040 l.min <sup>-1</sup>
S1-S3	S1 - 100 %
+	BOX RD AD FS REG CI



## DK50 6X4VRT/M

	6 x 2.2 kW
	6 bar, 8 bar
	500 l
	1560 l.min <sup>-1</sup>
S1-S3	S1 - 100 %
+	BOX RD AD FS REG CI



## DK50 9X4VRT/M

	9 x 2.2 kW
	6 bar, 8 bar
	500 l
	2380 l.min <sup>-1</sup>
S1-S3	S1 - 100 %
+	BOX RD AD FS REG CI







For full range of our product portfolio visit [www.ekom.sk](http://www.ekom.sk)



# DK 355 SC/M

Scroll compressor with 500-liter air tank provides a reliable and efficient air supply for various applications. Supplied with either an adsorption or refrigeration dryer, the compressor is housed in a noise reduction cabinet. Touch-screen display offers real-time monitoring of pressure, temperature and humidity, enabling operators to easily manage the system's performance and adjust settings as needed.



## DK 355 SC/M

	3 x 5.5 kW
 OUT	6 bar
	500 l
	1590 l.min <sup>-1</sup>
S1-S3	S1 - 100 %
+	BOX AD FS REG

# AIR TREATMENT UNITS

All-in-one systems that feature an efficient cooler, water separator, two-chamber adsorption dryer and air outlet filtration. Suitable for air flows from 500 l.min<sup>-1</sup> to 2250 l.min<sup>-1</sup> at pressures up to 9 bar; and pressure dew points -20°C, -40°C and even -70°C. An optional dew point sensor can be included for providing precise monitoring of humidity. Designed to be placed at the air end of any oil-free compressor.



	AD500	AD1500	AD2250
 OUT	6 bar, 8 bar	6 bar, 8 bar	6 bar, 8 bar
	500 l.min <sup>-1</sup>	1500 l.min <sup>-1</sup>	2250 l.min <sup>-1</sup>
S1-S3	S1 - 100 %	S1 - 100 %	S1 - 100 %



INDUSTRIAL COMPRESSORS



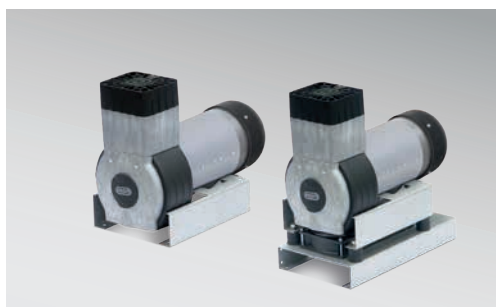
# AIR FOR MOTION






# COMPRESSOR PUMPS

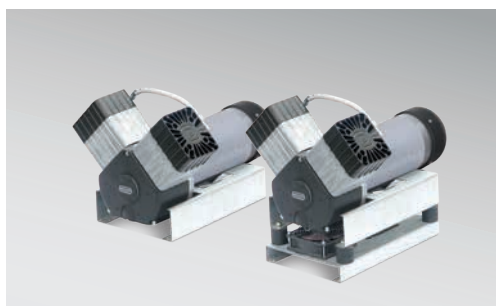


## FOR DIRECT CURRENT (DC)






### DJ / DJX

	0.6 kW
 (max)	8 bar
	60 l.min <sup>-1</sup> / 7 bar
S1-S3	S1 - 100%






### DV / DVX

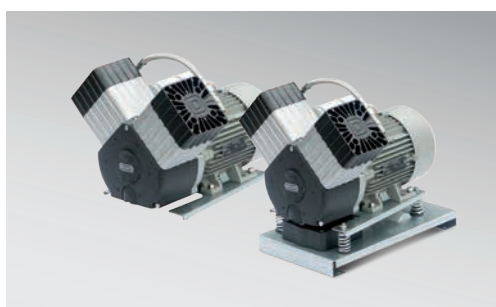
	1.1 kW
 (max)	8 bar
	110 l.min <sup>-1</sup> / 7 bar
S1-S3	S1 - 100%

## FOR ALTERNATING CURRENT (AC)




### AJ / AJX

	0.55 kW
 (max)	8 bar
	75 l.min <sup>-1</sup> / 5 bar
S1-S3	S1 - 100%



### AV / AVX

	1.2 kW
 (max)	8 bar, 10 bar
	140 l.min <sup>-1</sup> / 5 bar
S1-S3	S1 - 100%



For full range  
of our product  
portfolio visit  
[www.ekom.sk](http://www.ekom.sk)



MEDICAL COMPRESSORS

# AIR FOR HEALTH

# MEDICAL COMPRESSORS



## DK50 DI

	3.5 bar
	55 l.min <sup>-1</sup>
Peak flow	180 l.min <sup>-1</sup> / 0.5 s
	0,01 µm
S1-S3	S1 - 100 %
+	BOX MD FS



## DK50 DS / BASIC / STANDARD / ADVANCED

	3.5 bar
	40 / 50 / 60 l.min <sup>-1</sup>
Peak flow	200 l.min <sup>-1</sup> / 0.5 s
	5 µm
S1-S3	S1 - 100 %
+	BOX MD FS SD30



## DK50 DE / BASIC / STANDARD / ADVANCED

	3.5 bar
	40 / 50 / 60 l.min <sup>-1</sup>
Peak flow	200 l.min <sup>-1</sup> / 0.5 s
	5 µm
S1-S3	S1 - 100 %
+	BOX MD FS SD30



## DK50 DE LOW FLOW

	3 bar
	20 l.min <sup>-1</sup>
Peak flow	N/A
	5 µm
S1-S3	S1 - 100 %
+	BOX



For full range of our product portfolio visit [www.ekom.sk](http://www.ekom.sk)



# ACCESSORIES



**BOX** **NOISE REDUCTION CABINETS**

Sheet metal cabinets with active cooling and effective noise reduction up to 20 dB(A).



**AD** **ADSORPTION DRYER**

Compact all-in-one dryers with pressure dew points -20°C, -40°C and -70°C for ultra dry air requirements.



**MD** **MEMBRANE DRYER**

Quiet dryers with coolers for small compressors with pressure dew point 3°C and 0.1µm filtration.



**RD** **REFRIGERATION DRYER**

Condensation dryer units with pressure dew point +3°C for high flow applications.



**FS** **FILTRATION UNITS**

Modular filters for flows from 50 l.min<sup>-1</sup> to 2500 l.min<sup>-1</sup>, with filtration down to 0,01µm, optionally with AC / HC filters.



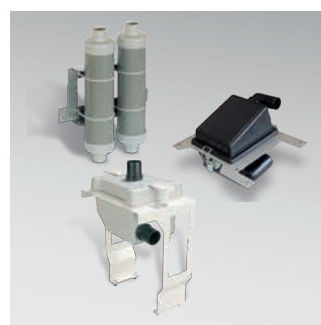
**AOK** **AUTOMATIC DISCHARGE OF CONDENSATE**

Kit to automatically discharge condensate from compressor air tank at user-adjusted time intervals.



**REG** **PRESSURE REGULATORS**

Adjustable pressure regulators ranging from 0.5 to 8.5 bar, with interface available from 1/4" to 3/4".



**DS** **EXHAUST SILENCER**

Suitable for suction units to minimize the noise at air exhaust by 4 dB(A). Options with HEPA filter and standard filtration.



**3KOM** **3KOM CONTROL SYSTEM**

Two or three EKOM compressors connected in stand-by / duty. The system controls the gradual startup and function rotation.



**AS** **AMALGAM SEPARATOR KIT**

Mounting frame kit for DO 3 Standard and Advance to use with standard sedimentation amalgam separators (not included).



**VV** **VACUUM VALVE**

A control of the vacuum pressure in dental suction system, ensuring optimal performance and cooling of the suction blower.



**HF** **SILENCER WITH HEPA FILTER**

Optional for all types of DO 3 for noise reduction and enhancing the hygiene and comfort of the clinical environment.



**CI** **CENTRAL INTAKE FILTER**

A central filter kit, reducing all air pump intake filters into one large filter with a mount. Designed for all TOWER compressors.



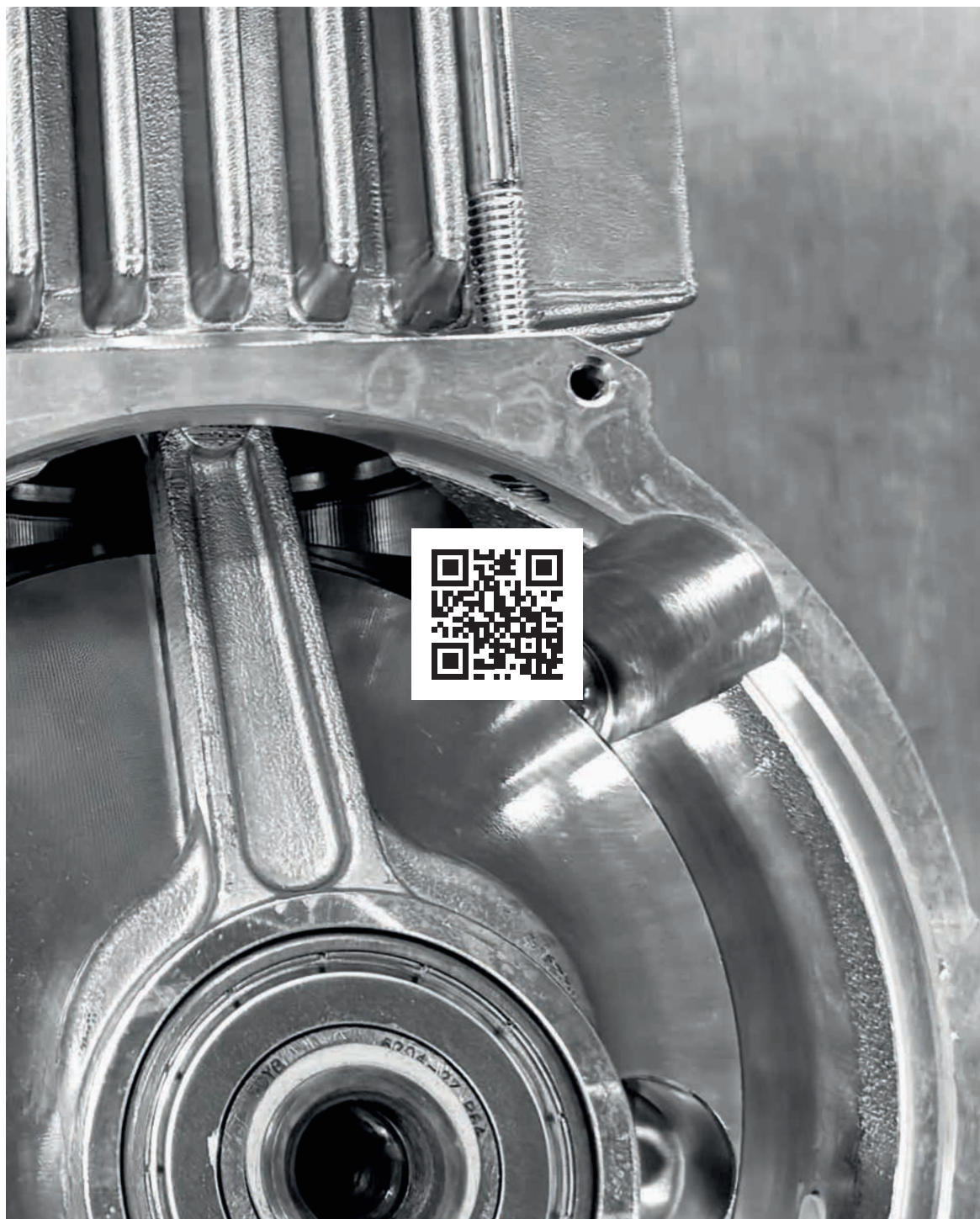
**SD30** **MOBILE TROLLEY SD30**

Designed for DK50 DS and DE for mounting respiratory ventilator. Braked castors. Optional humidifier holder. Customizable mounting plate.



For full range of our product portfolio visit [www.ekom.sk](http://www.ekom.sk)

# EKOM



**EKOM spol. s r.o., Priemyselná 5031/18, 921 01 PIEŠŤANY, Slovak Republic, [www.ekom.sk](http://www.ekom.sk)**

The company reserves the right to change the technical data of the products without prior notice. The content of this catalog is subject to the copyright of EKOM and its modification or reproduction without permission is unauthorized.